

WetFloat®

Wet-Separation for NF-Metals

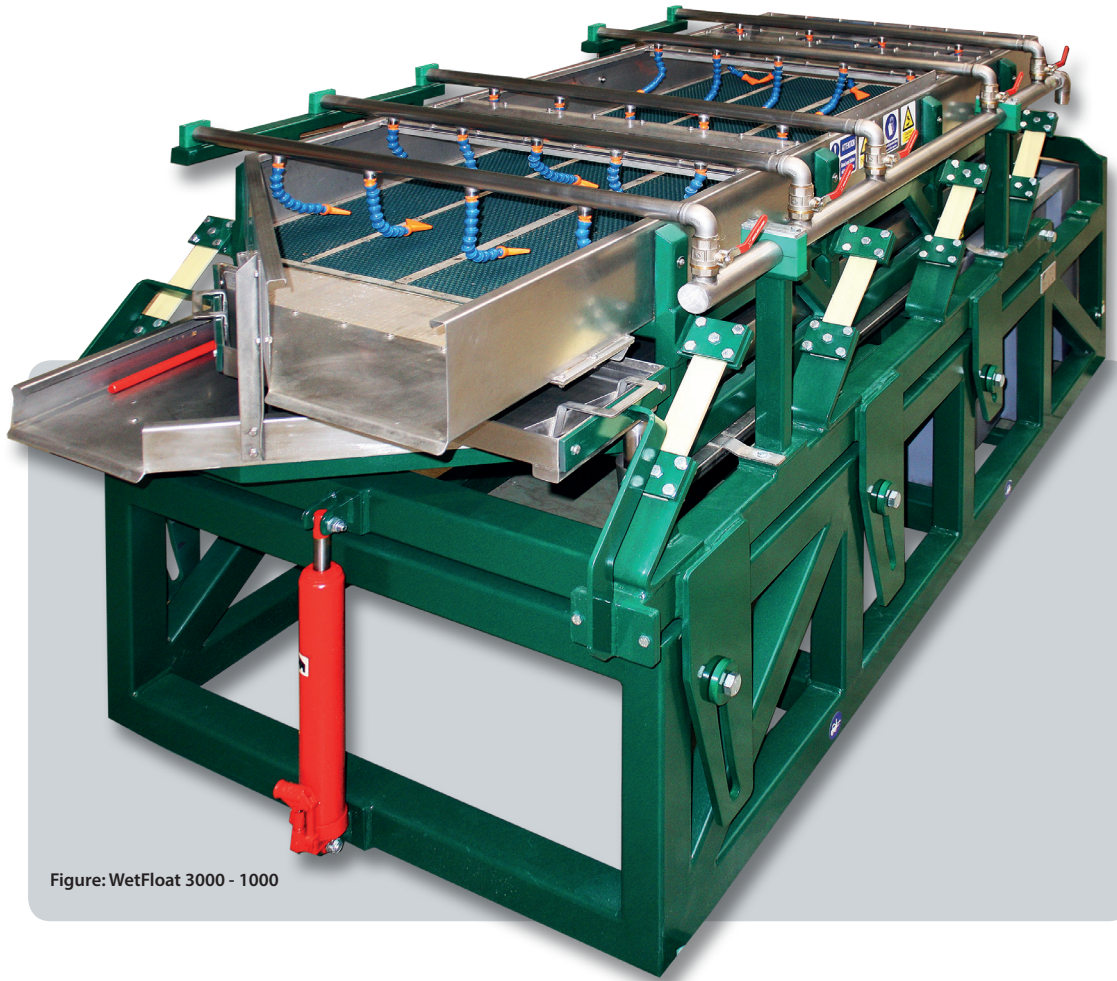
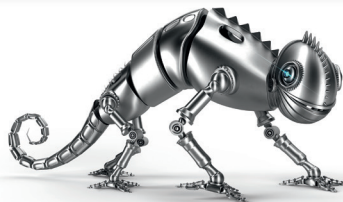


Figure: WetFloat 3000 - 1000

- Density-based separation of multiple materials
- Metal separation from wire mixture
- Separate Copper and Aluminum into purest fractions
- Metal Recovery from E-Scrap
- Significant reduction in metal losses
- Constant product quality
- Dedusting not required
- Adjustable tilt-angle for material-specific configuration
- Low water consumption due to closed loop design

BENEFITS



www.sicon-america.com





How does it work?

After granulation or similar processing steps, mixed fractions, such as non-ferrous mixtures or aluminum-copper mixed fractions, are fed onto a separation deck of the WetFloat®. A steady and continuous water supply creates a float on the deck causing light particles such as plastics to float while heavier particles such as metals descend to the bottom of the separation deck. Adjustable by the tilt of the table, the light-floating particles are conveyed towards the lower part of the WetFloat®. Simultaneously, the vibrating separation deck transports the heavy particles in the opposite direction towards the upper end of the WetFloat®. As a result the WetFloat® produces two material-pure fractions.

SICON's WetFloat® is available in three different size configurations to match your application needs best

	WetFloat® 2000 - 300	WetFloat® 2500 - 600	WetFloat® 3000 - 1000
Dimensions [mm/inch]	2,600 x 850 x 1,350 / 102 x 33 x 53	3,400 x 1,100 x 1,350 / 134 x 43 x 53	3,600 x 1,400 x 1,600 / 141 x 55 x 63
Dimensions Separation Deck [mm/inch]	2,000 x 300 / 78 x 12	2,500 x 600 / 98 x 24	3,000 x 1,000 / 118 x 39
Weight [kg/lbs]	320 / 705	750 / 1650	1,200 / 2650
Drive [kW/HP]	1,5 / 2	3 / 4	3 / 4
Throughput capacity [kg/h / lbs/h]	300 - 400 / 660 - 880	700 - 800 / 1,540 - 1,760	1,200 - 1,300 / 2,640 - 2,860



WetFloat® Separated Aluminum



WetFloat® Separated Copper

Interested in a budgetary quote for your application?

Contact us at info@sicon-america.com or at (678)-527-1433

SICON Deutschland
Vordere Insbach 24-26
57271 Hilchenbach, Germany
Phone: +49 (2733) 811 76-0
info@sicon.eu
sicon.eu

SICON America
999 Peachtree St NE, Suite 400
Atlanta, GA 30309, USA
Phone: +1 (404) 512-3397
info@sicon-america.com
sicon-america.com

