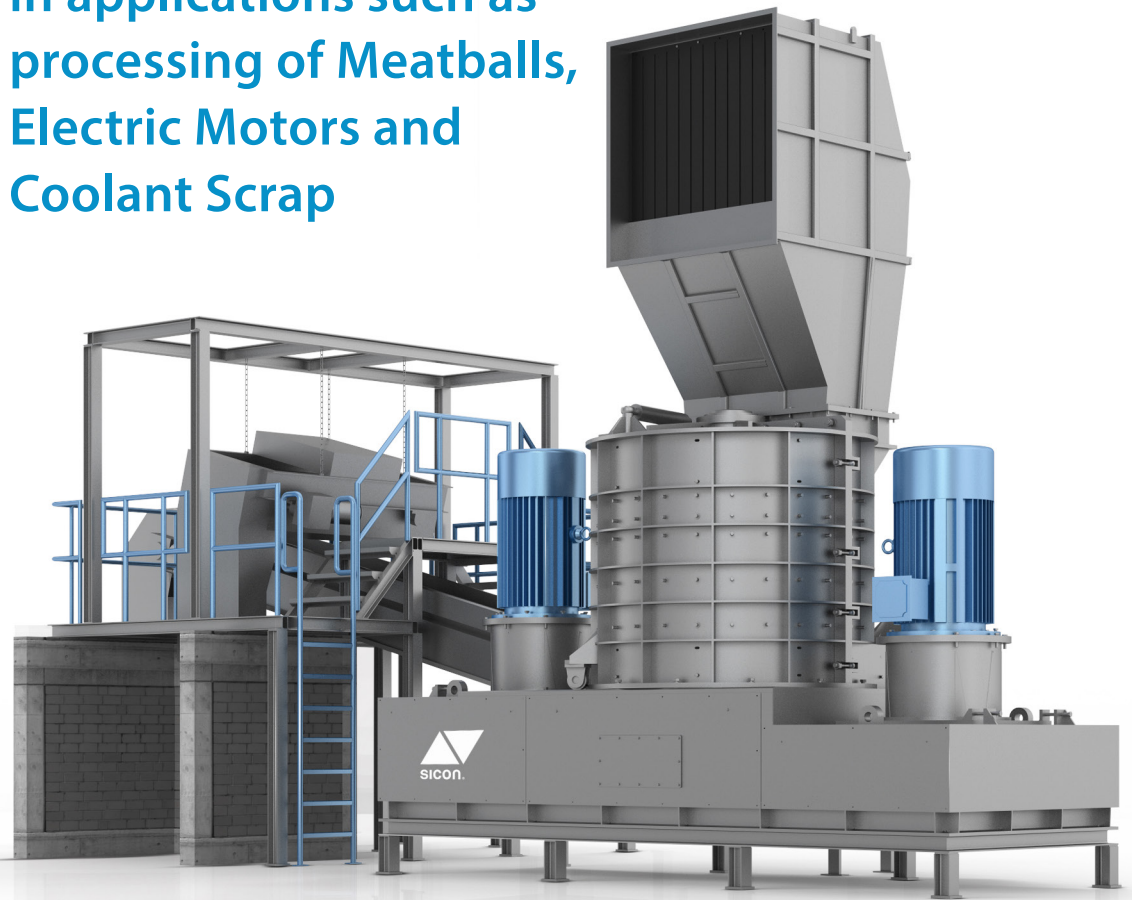


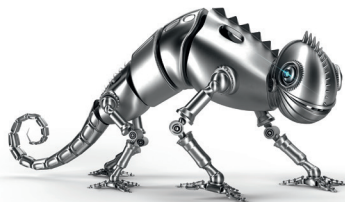
# EcoShred® Vertec

**Achieves** maximum liberation  
in applications such as  
processing of Meatballs,  
Electric Motors and  
Coolant Scrap



- Vertical shredder with throughputs of up to 10 mt/h
- Individually adaptable to customer needs including feeding, exhaust handling and downstream systems
- Complete preparation of metal composites (meatballs and electric motors)
- Complete recovery of properly separated copper and ferrous scrap
- Quick ROI due to low investment costs, obtainable high product quality and easy marketing of the products
- Sturdy welded construction - All inner parts of the machine that come into direct contact with scrap are equipped with wear-resistant liners.
- Simple to maintain wear parts are easy to access and exchange
- Generously dimensioned rotor bearings for long plant life

**BENEFITS**



[www.sicon-america.com](http://www.sicon-america.com)



With the modular SICON solutions for metal processing, the EcoShred® Vertec is the ideal addition for the scrap processing sector. One example is the processing of electrical and electronic scrap: after gentle pre-crushing by the rotor shears and separation of contaminated components, further careful processing takes place in the EcoShred® Vertec for subsequent plastic and metal separation.

Variante	EcoShred® Vertec S	EcoShred® Vertec M	EcoShred® Vertec L	EcoShred® Vertec XL	EcoShred® Vertec XXL
Dimension (L/W/H) [mm/inch]	3,300 × 3,800 × 5,000 130 × 150 × 197	3,300 × 3,800 × 5,000 130 × 150 × 197	5,300 × 4,650 × 6,450 209 × 183 × 254	5,500 × 4,750 × 6,600 217 × 187 × 260	5,940 × 5,665 × 7,145 234 × 223 × 281
Hopper opening (W/H) [mm/inch]	1,280 × 1,200 50 × 47	1,280 × 1,200 50 × 47	1,520 × 1,600 60 × 63	1,600 × 1,600 63 × 63	1,800 × 1,600 71 × 63
Input height [mm/inch]	3,700 / 146	3,700 / 146	4,340 / 171	5,300 / 209	6,200 / 244
Rotation speed [r/min]	500 - 680	500 - 680	500 - 580	500 - 580	500 - 580
Minimum clearance [mm/inch]	30 / 1.2	30 / 1.2	30 / 1.2	30 / 1.2	30 / 1.2
Number of upper liners	12	12	12	12	12
Number of lower liners	12	12	12	12	12
Number of breakers	2	2	2	2	2
Number of mill rings	36	36	64	64	64
Chamber inner diameter [mm/inch]	1,140 / 45	1,140 / 45	1,560 / 60	1,680 / 66	2,100 / 83
Chamber operation height [mm/inch]	1,680 / 66	1,680 / 66	1,785 / 70	1,890 / 75	1,950 / 77
Drive power [kW/HP]	110 / 150	160 / 220	264 / 360	500 / 680 *	710 / 965
Weight [kg/lbs]	Approx. 14,500 Approx. 32,000	Approx. 15,000 Approx. 33,000	Approx. 30,000 Approx. 66,000	Approx. 45,000 Approx. 99,000	Approx. 65,000 Approx. 140,000
Throughput meatballs [mt/h]	Approx. 2	Approx. 3-4	Approx. 6	Approx. 8	Approx. 9 -10

\* The EcoShred® Vertec XL is also available with 440 kW (600 HP).

## Contact us for more information about our products

You can contact us by phone at +1 (678) 527 14-32 or by email [info@sicon-america.com](mailto:info@sicon-america.com)

**SICON Germany**  
Vordere Insbach 24-26  
57271 Hilchenbach, Germany  
Phone: +49 (2733) 811 76-0  
[info@sicon.eu](mailto:info@sicon.eu)  
[sicon.eu](http://sicon.eu)

**SICON America**  
999 Peachtree St NE, Suite 400  
Atlanta, GA 30309, USA  
Phone: +1 (404) 512-3397  
[info@sicon-america.com](mailto:info@sicon-america.com)  
[sicon-america.com](http://sicon-america.com)

